

[c o m m a]
p a r t n e r s
architecture + planning



INTERIOR DESIGN CIVIL ENGINEERING SYSTEMS - STRUCTURES RESTRUCTURING / RECOVERY SPECIALIST WORKS
INFRASTRUCTURES ENVIRONMENTAL ENGINEERING COMPETITIONS - MOUNTING

PARTNERS



LUIGI ASERO

Italian nationality,
born in Paternò, 14-12-1937
1965 - Padua University
Faculty of Engineering
Construction engineer

In the public administration he has dealt with issues of different kinds: technical department, process foreman, energy manager, town planning scheme of Catania. Recently he has focused his complete experience on the analysis and on the technical and procedural organization of the complex process that goes from the planning to the realization of a work.



SALVATORE ASERO

Italian nationality,
born in Catania, 01-09-1973
1999 - Catania University
Faculty of Engineering
Construction engineer

Experienced in structure planning, modelling, calculation and construction with particular attention to the compatibility between the architecture conception and the integration with the plant engineering; masonries, use of all building materials (concrete, steel, wood, aluminium, glass, etc) including their restoring and consolidation.



GIUSEPPINA CELLINO CAUDO

Italian nationality,
born in Catania, 30-07-1976
2006 - Catania University
Faculty of Engineering
Construction engineer

Experience in the designing of building details. Wide experience also in the old building techniques.
Good knowledge of the drawing and graphic representation techniques.
Experience also in the field of 3D modelling and rendering.
Experience in safety.



SALVATORE CONTRAFATTO

Italian nationality,
born in Catania, 10-04-1959
1983 - Reggio Calabria University
Faculty of Architecture
Architect

Full experience in architectura designing mainly in the re-use and development field, specific knowledge in the preparation and running of public works contracts and of project financing.
Designing, technical advice and building management.

**SEBASTIANO CUFFARI**

Italian nationality,
born in Catania, 28-10-1947
1972 - Politecnico di Torino
Faculty of Engineering
Construction engineer

Experience in the designing of building details. Wide experience also in the old building techniques. Good knowledge of the drawing and graphic representation techniques. Designing, advice and management building. Experience in safety.

**ANTONIO GARRO**

Italian nationality,
born in Catania, 22-09-1955

1984 - I.T.G. F. Juvara (SR)
Surveyor

Thirty years of experience in topographic surveys using traditional systems, total station and GPS. Works of surveying in architectural, archaeological-museum, industrial and territorial using laser scanner 3D and including post processing, modeling and reverse engineering.

**GIULIA LA GANGA VASTA**

Italian nationality,
born in Giarre (CT), 06-01-1985
2009 - Catania University
Faculty of Engineering
Construction engineer

Graduated in Construction Engineering and of environmental recovery in the Faculty of Engineering at the University of Catania. She has worked with the University of Catania for the Convention with the Centre for the design and the restoration Department cultural and environmental assets of Palermo. With the dissertation is specialized in architectural and archaeological survey with the use of 3d laser scanner.

**SALVATORE RIGAGLIA**

Italian nationality,
born in Yonkers (USA), 05-05-1974
2001 - Catania University
Faculty of Engineering
Construction engineer

Civil engineer freelancer, he has gained experience in construction and urban planning in the private and public sectors. It deals with seismic structures and works to support and consolidation. He works frequently also in the context of technical advice in the areas of competence accompanied to court procedures, in the assessment of property for purposes of credit on behalf of lenders, safety in the workplace, environmental engineering, energy conservation and buildings restoration.

**ANTONINO SALANITRO**

Italian nationality,
born in Mistretta (ME), 14-03-1959
1989 - Palermo University
Faculty of Architecture
Architect

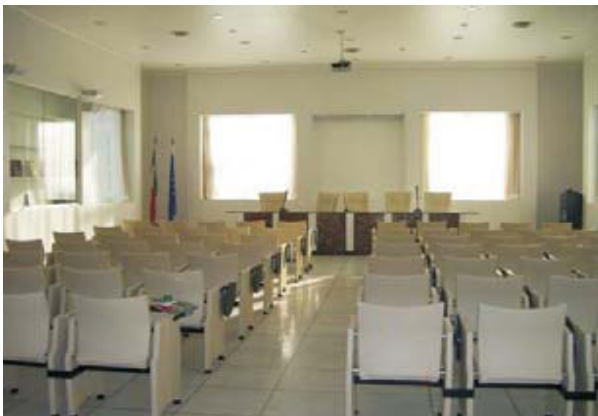
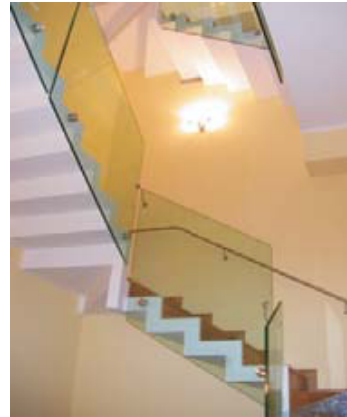
Full experience in designing and building management in the field of private and public housing, landscape and environment and in the study of projects of environmental impact. Deep knowledge of the technical aspects concerning the designing and building management in the field of renovation and restoration of historical buildings.

**SERGIO MARIA TRAINITI**

Italian nationality,
born in Butera (CL), 19-07-1962
1990 - Catania University
Faculty of Earth Sciences
Geologist

The activity ranges in various fields of applied geological sciences: Geological studies for PRG, hydro-geomorphological studies on slopes subject to landslides, hydrogeological studies for the exploitation of surface and ground water resources, both for the regulation of the courses' water; identification, planning and recovery of solid urban waste landfills and an inert, impact studies and environmental feasibility.

INTERIOR DESIGN



CIVIL ENGINEERING





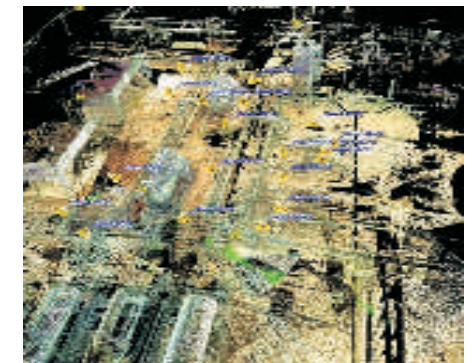
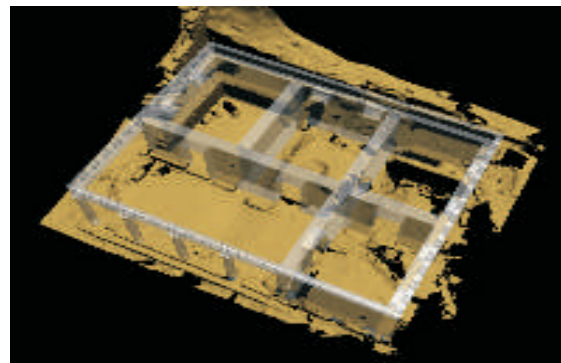
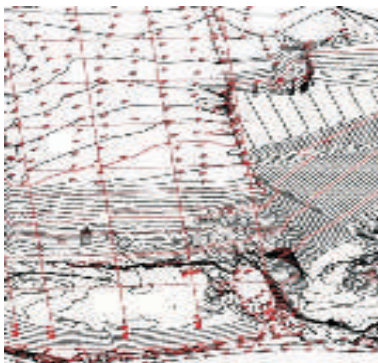
SYSTEMS - STRUCTURES



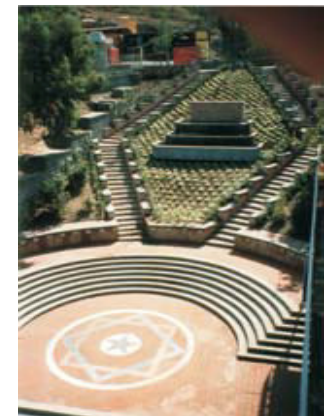
RESTRUCTURING / RECOVERY



SPECIALIST WORKS

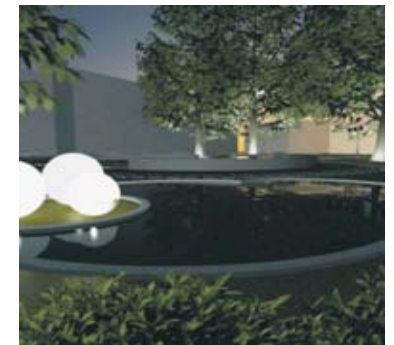


INFRASTRUCTURES

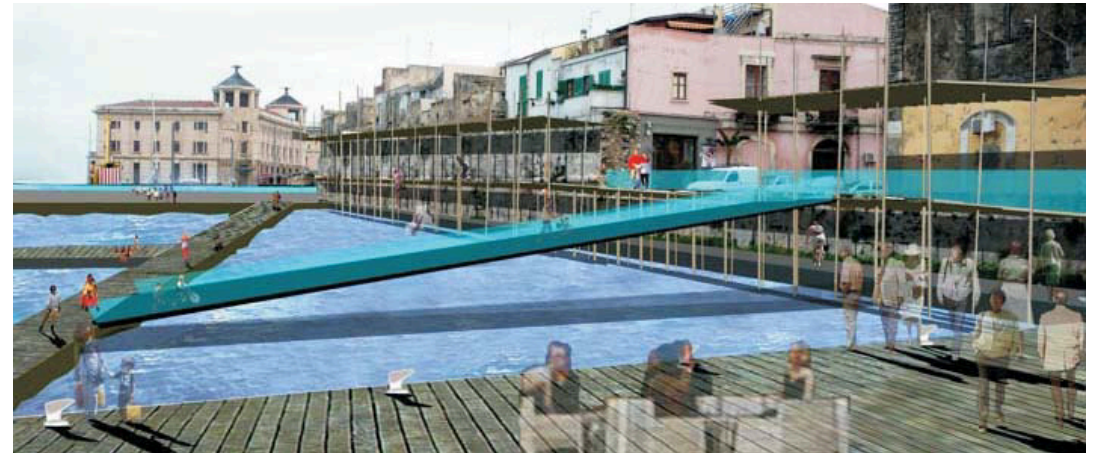




ENVIRONMENTAL ENGINEERING



COMPETITIONS - MOUNTING



CONTACTS

COMMAPARTNERS

Società Cooperativa a.r.l.

DESIGN SERVICES

INTEGRATED ENGINEERING

info@commapartners.it
tel./fax: +39 095 313347

via Dottor Consoli, 100
95124 Catania
Italy

Commapartners is a cooperative company of engineers, architects, geologists and surveyors who have had different job experiences and who share the common objective to provide a technical and highly qualified service able to control the whole planning process (designing, building management, accounting, safety, testing).

Commapartners is composed of 11 technicians and of one developer. The working flexibility of Commapartners is also granted by a fully tested external co-operation.

Commapartners activity covers mainly the building field and is particularly specialized in town planning, building of public and private housing, maritime works, hotels, hospitals, universities, shopping centres, industrial and tertiary structures, construction development and restoring.

www.commapartners.it